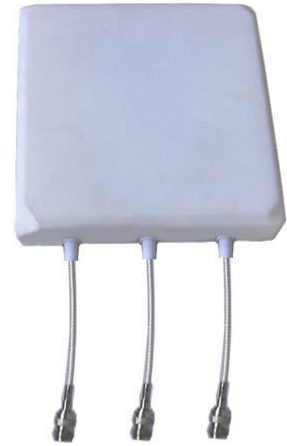
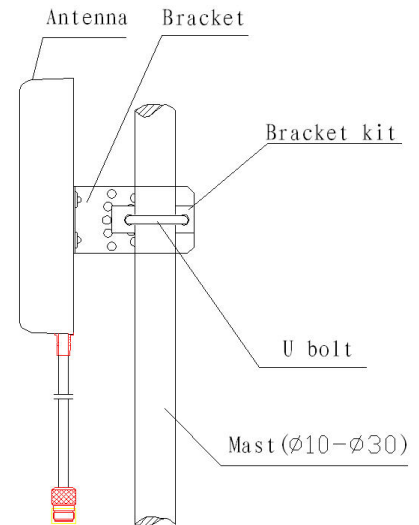


## SPECIFICATIONS

Model	RFAnt-5150DP-123-K1		
Freq. Range-MHz	5150 ~ 5850		
Bandwidth-MHz	700		
Gain-dBi	12		
Beamwidth-°	H: 90 E: 18	H: 18 E: 90	H: 90 E: 18
F/B-dB	≥20		
V.S.W.R.	≤1.8		
Impedance-Ω	50		
Polarization	Vertical	Horizontal	Vertical
Max. Power-W	100		
Connector Type	N-Female		
Dimension-mm	190 x 190 x 40		
Weight-kg	0.5		



## Installation Guide



## APPLICATIONS

5.1GHz / 5.5GHz / 5.8GHz WLAN System

IEEE 802.11a Wireless LAN

Public Wireless Hotspot

Wireless Internet Provider "Cell" Sites

## FEATURES

Superior Performance

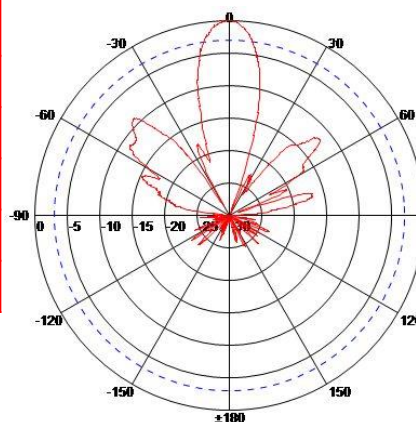
Vertical Polarization

All Weather Operation

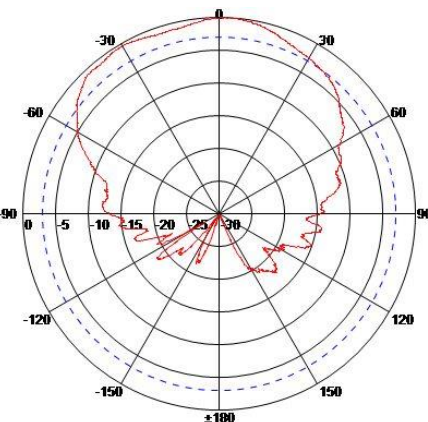
Includes Mast Mounting Hardware

Integral N-Female Connector

### E-Plane Field Pattern



### H-Plane Field Pattern



Specification are subject to changes without prior notice due to engineering improvement. All brands and product names are trademarks or registered trademarks of their respective holders. \*Wireless range and performance may vary with environment.