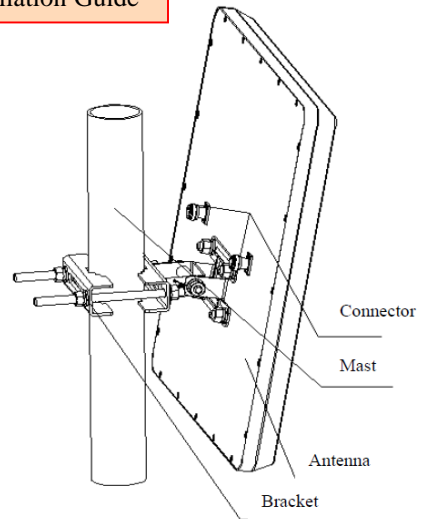




Installation Guide



SPECIFICATIONS

Model	RFAnt-5150DP-212-K1
Freq. Range-MHz	5150 ~ 5850
Bandwidth-MHz	700
Gain-dBi	21
Ver. Beamwidth-°	8
Hor. Beamwidth-°	15
V.S.W.R.	≤2
Isolation-dB	≥30
Impedance-Ω	50
Polarization	Vertical & Horizontal
Max. Power-W	50
Connector Type	2x N-Female
Dimension-mm	380 x 380 x 33
Weight-kg	1.6 (without bracket)
Mounting Way	Mast Mount
Pole Diameter-mm	Φ35 ~ Φ75

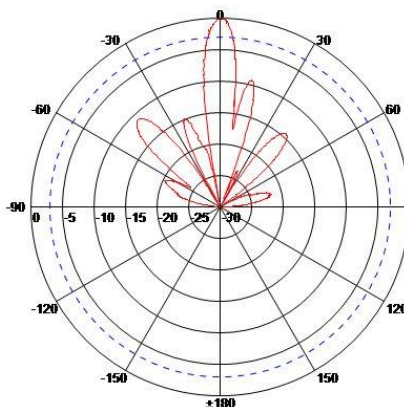
APPLICATIONS

- 5.8GHz UNII System
- 5.8GHz ISM System
- 5.15-5.85GHz WLAN System
- Support 802.11a/g
- WiFi System

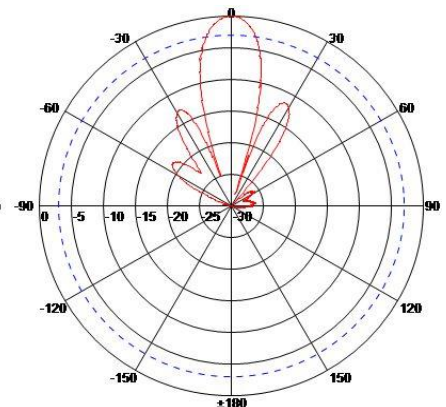
FEATURES

- Broadband, High Gain, Low VSWR
- V/H Polarization Is Compatible
- Low Profile, Good Appearance
- Strong Adaptability Of Weather
- Outdoor Mast Mount

E-Plane Field Pattern



H-Plane Field Pattern



Specification are subject to changes without prior notice due to engineering improvement. All brands and product names are trademarks or registered trademarks of their respective holders. *Wireless range and performance may vary with environment.