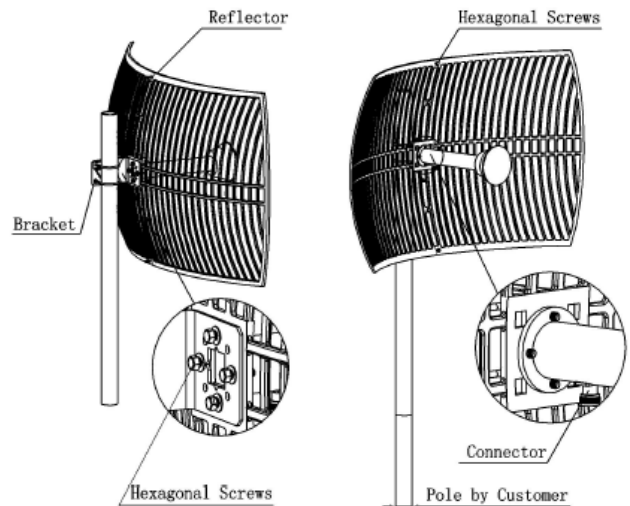


## SPECIFICATIONS

Model	RFAnt-5150GP-30-K1
Freq. Range-MHz	5150 ~ 5850
Bandwidth-MHz	700
Gain-dBi	30
Ver. Beamwidth-°	5
Hor. Beamwidth-°	3.5
F/B Ratio-dB	≥25
V.S.W.R.	≤1.5
Impedance-Ω	50
Polarization	Vertical or Horizontal
Max. Power-W	100
Connector Type	N Female
Caliber Size-m	0.6 x 0.9
Weight-Kg	5
Pole Diameter-mm	Φ40 ~ 50



### Installation Guide



## APPLICATIONS

5.1GHz / 5.5GHz / 5.8GHz WLAN

5GHz WiMax System

Client Antenna

## FEATURES

High Gain, Good F/B

High Precise Grid Reflector

UV-Coated Aluminum Alloy

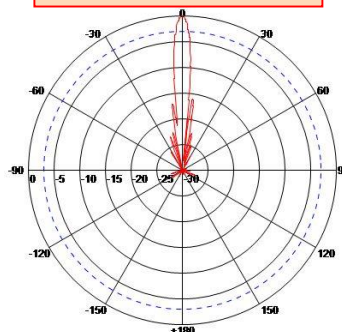
V/H Polarization Is Compatible

Standard Mounting Kits

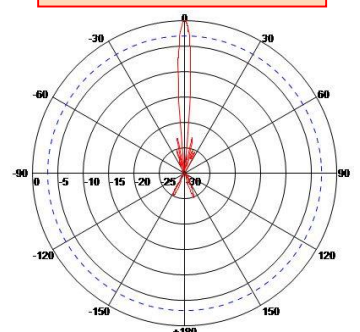
### Installation Guide

1. Assemble two pieces of Reflectors Symmetrically.
2. Install the feedhorn on the reflector. Make sure the polarization mark arrow direction on the feedhorn accords with the grid direction. When the arrow direction and the grid direction are both vertical to the ground, the antenna is vertically polarized. When the arrow direction and the grid direction are both parallel to the ground, the antenna is horizontally polarized.
3. Install the L bracket on the back of the reflector then install the antenna on the mast supplied by the customer according to the sketch.
4. Use equipment to test the receiving signal. Tune the antenna azimuth angle and pitching angle to make the antenna receive best signal. Fasten all the screws and seal the connector which connects the antenna and cable.

### E-Plane Field Pattern



### H-Plane Field Pattern



Specification are subject to changes without prior notice due to engineering improvement. All brands and product names are trademarks or registered trademarks of their respective holders. \*Wireless range and performance may vary with environment.